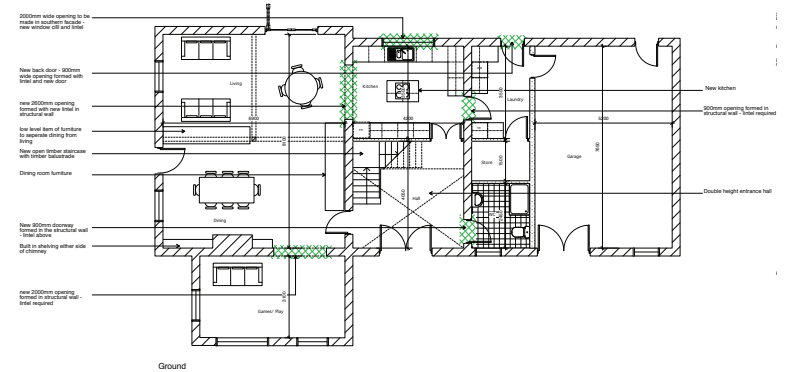


RESIDENTIAL PROJECTS

Over the past ten years we have been responsible for the design and/or delivery of a number of 'one off' private residential projects, more recently as Pennine Sustainability and previously with Cottrell and Vermeulen Architecture and Tisdall Brougham Architects. Whether new build or refurbishment; conservation area or busy high street; each project presents a set of unique challenges and requires a corresponding skill set. Our expertise in dealing with statutory and planning obligations and our ability to advise on environmental sustainability adds value to each project. In each case we work closely with our client to understand their needs and we work creatively with what we find on the site to provide a design that is responsive, economical and delightful.

Cazalis

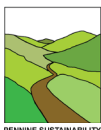


The brief for this project was to transform an existing farmhouse and adjoining barn into a modern family home without compromising the building's unique character. Set amongst the rolling countryside of south western France with the Pyrenees in sight, this house and its inhabitants are very much a part of the landscape and community of Cazalis.

The basic strategy was to orient the key rooms along the south facing elevation, connecting them via a generous double height entrance hall and a gallery at first floor level. Solar thermal panels provide the energy to heat the swimming pool and contribute to the heat load requirements of the house.

Bathrooms and storage occupy the north elevation, with roof lights inserted to limit the number of alternations require to the facade.

The original house (above); proposed layout (above right).



PENNINE SUSTAINABILITY

Key Details

Architect: Tisdall Brougham Architects

Building Completed: 2011