

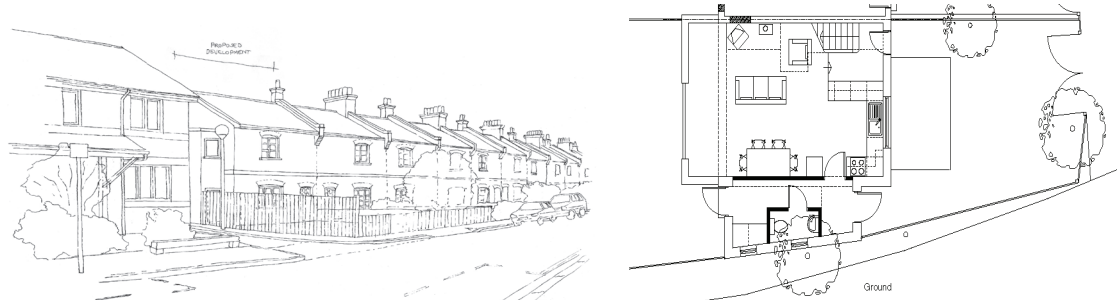
RESIDENTIAL PROJECTS

Over the past ten years we have been responsible for the design and/or delivery of a number of 'one off' private residential projects, more recently as Pennine Sustainability and previously with Cottrell and Vermeulen Architecture and Tisdall Brougham Architects. Whether new build or refurbishment; conservation area or busy high street; each project presents a set of unique challenges and requires a corresponding skill set. Our expertise in dealing with statutory and planning obligations and our ability to advise on environmental sustainability adds value to each project. In each case we work closely with our client to understand their needs and we work creatively with what we find on the site to provide a design that is responsive, economical and delightful.

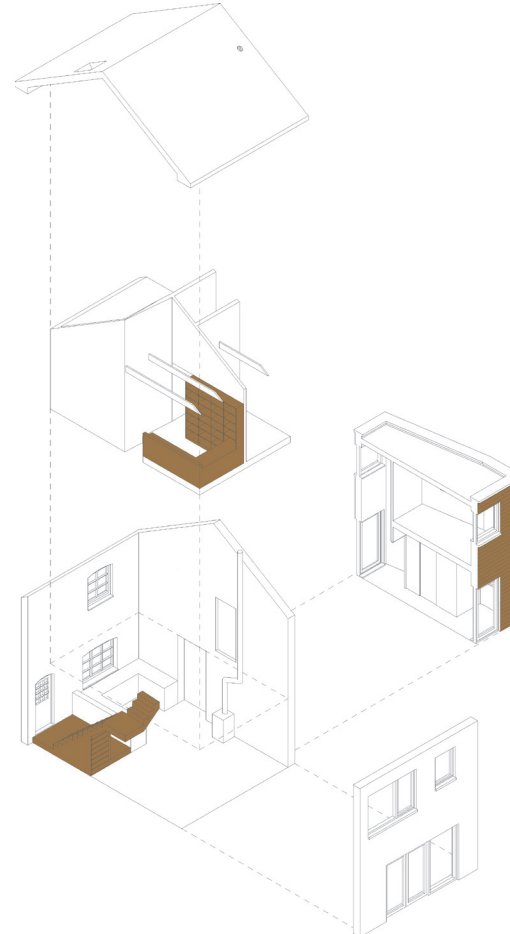


Designed for a retired couple, this proposal was for the addition of a new build house to the end of an existing terrace of Victorian railway cottages on the edge of a conservation area in Wood Green, London.

Our approach was to respond sensitively and creatively to the existing terraces by mirroring the existing end of terrace house we'd be adjoining, including the use of London stock bricks in a Flemish bond, slate roofs and brick arches to the windows and doors. A thin side addition would then be treated as a modern extension, distinct from the rest of the terrace, with timber cladding and windows cut as clean openings.



Proposed street view and ground floor plan (above); existing street view (top); axo of proposed (right).



Key Details
Architect: Tisdall Brougham Architects
Building Completed: 2013

